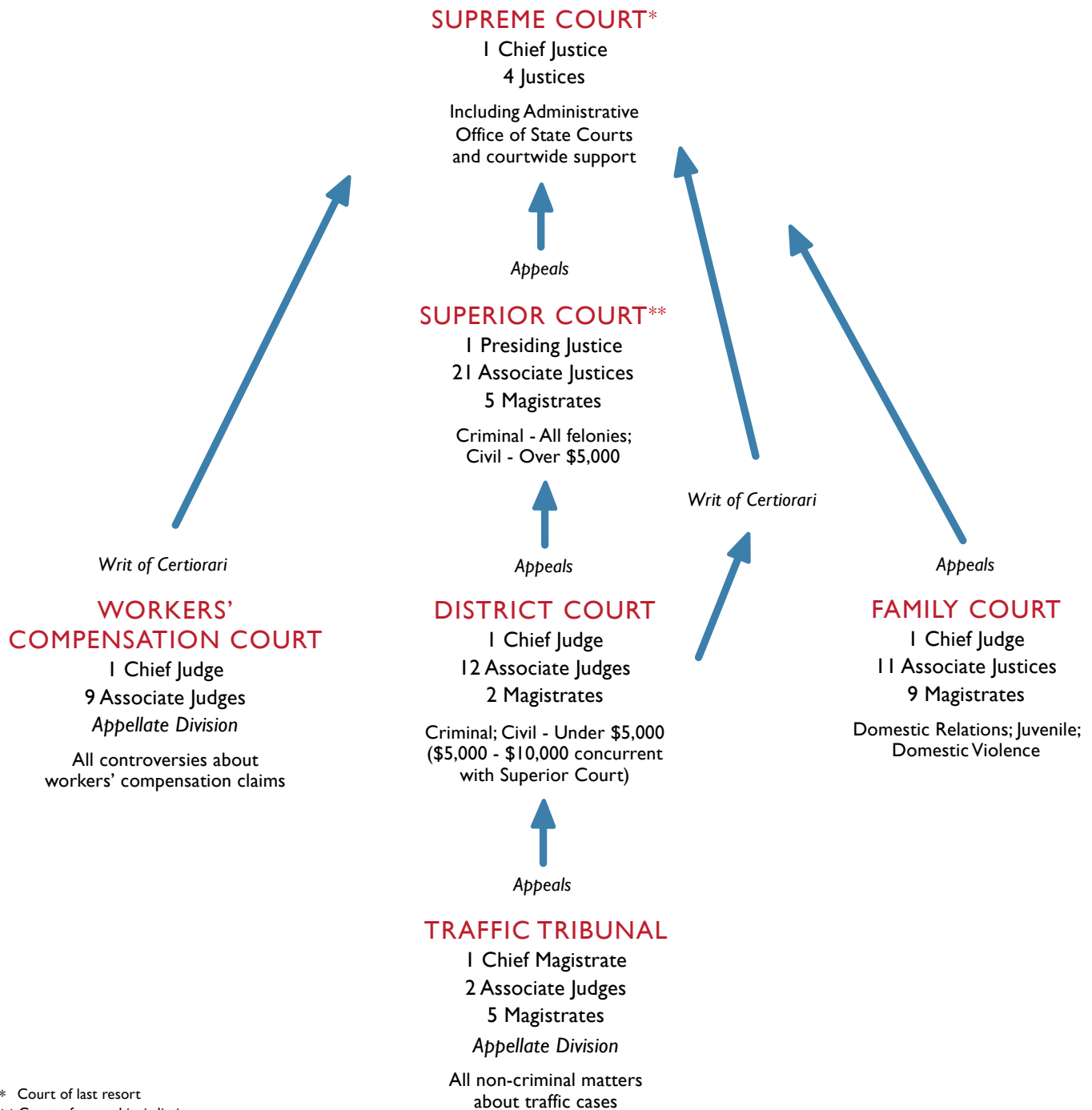


# Rhode Island Court Structure

## ADMINISTRATIVE OFFICE OF STATE COURTS

State Court Administrator • Finance and Budget • Employee Relations  
 State Law Library • Judicial Technology Center • Facilities and Operations/Security  
 Judicial Records Center • Domestic Violence Training and Monitoring Unit  
 Mandatory Continuing Legal Education • Community Outreach and Public Relations  
 Law Clerk Department • Judicial Planning • General Counsel and Alternative Dispute Resolution  
 Disciplinary Counsel • Supreme Court Clerk's Office • Appellate Screening  
 Administrative Assistant to Chief Justice • Interpreters' Office



\* Court of last resort  
 \*\* Court of general jurisdiction  
 All other courts have limited jurisdiction