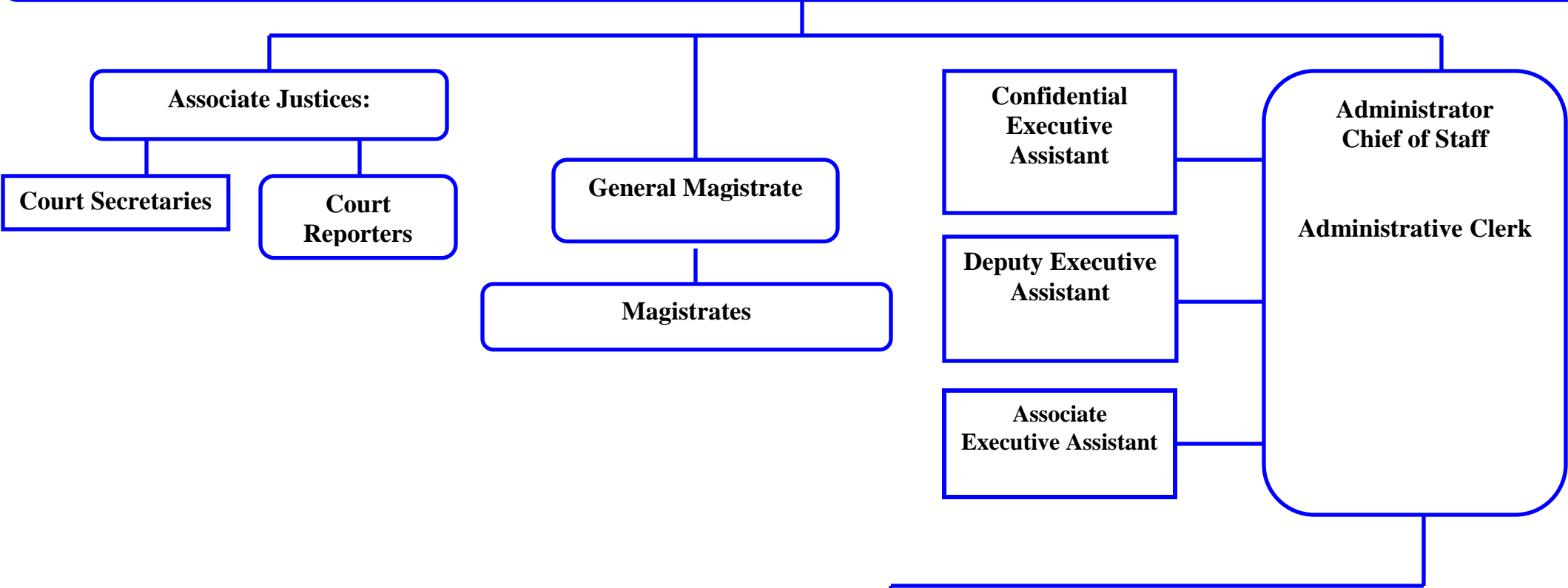


CHIEF JUDGE MICHAEL B. FORTE



FAMILY COURT DEPARTMENTS			
JUVENILE CLERKS OFFICE	JUVENILE SERVICES / SPECIALTY CALENDARS	RECIPROCAL	FAMILY SERVICES
DOMESTIC CLERKS OFFICE	CASA	ACCOUNTING	MEDIATION
NEWPORT COUNTY	WASHINGTON COUNTY	KENT COUNTY	